

ORIGINAL PROBLEM

A school gymnasium is being remodeled. The basketball court will be similar to an NCAA basketball court, which has a length of 94 feet and a width of 50 feet. The school plans to make the width of the new court 45 feet. Find the perimeters of an NCAA court and of the new court in the school.

NOTICE?

WONDER?



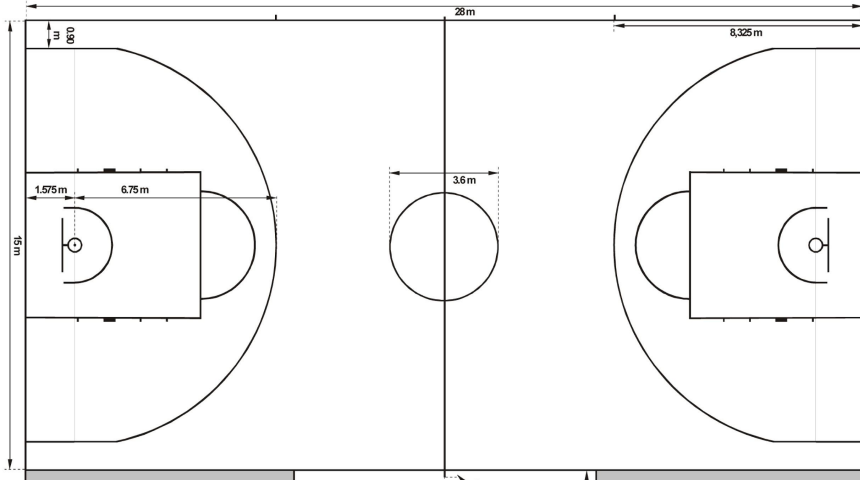
The Mashpee High School gymnasium is being remodeled. The basketball court will be similar to an NCAA basketball court.

NOTICE?

WONDER?

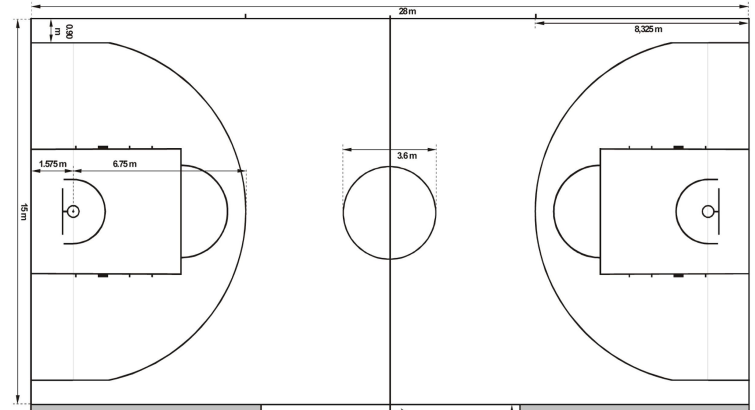
NCAA court

94 feet



50 feet

New MMHS court



45 feet